

CCTVTECH - PBNV series

Power View Plus

Long Range

PTZ Camera

Application

With unique solid waterproof design and Fog/Haze Penetration, night vision features optional, it is tailor- made to be applied in low-light. It is ideal for applications such as city surveillance, government agency, border, airport, ports, perimeter, high way, industrial area and mobile surveillance, and so on.



The PowerView plus (PVP) series are integrated with the special camera, long range lens, adjustable IR Laser, variable high-speed pan/tilt motor, central processing module and enclosure. It has excellent performances at both daytime and night, even in a foggy and rainy days. The body is ruggedized vandal resistance and water-tight designed, and could work in all-weather conditions

The built-in zoom lens is designed to match the high sensitive day/night camera and IR Laser illumination, and to minimize the difference between

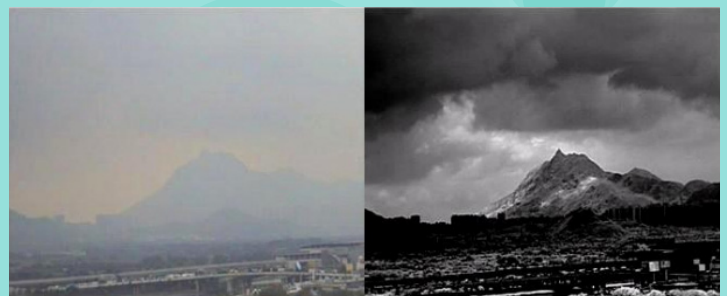


PBNV-350

the focus panels on a visible radiation and that on a near-infrared radiation.

The state-of-art design of pan/tilt system offers not only flexible pan and tilt rotation, but also delivers an accurate user controllable interface, which allows users to operate the system in "micro-step" way.

With the above outstanding technologies, the PVP Series can detect target in 1~7km away in the most diverse weather conditions. The typical applications include: marine vessels, airport, harbors, ports, frontiers defense, customs, high way etc.



Fog Penetrate
Mode OFF

Fog Penetrate
Mode ON

Unique Features:

- Integrated with HQ2 fog penetrate camera, CPM, variable high-speed pan/tilt motor and enclosure
- Lens options: 10~350mm (Motorized focus, zoom and auto iris)
The laser illuminators work at 808nm, with 10W power
- Metal body design adopts fully sealed waterproof design, IP66 waterproof standard
- Geared pan/tilt design with auto-lock function and optional "micro-step" control
- Unique DIP switch & hotkey design simplify system setup
- Unique wiper design makes clear image in rainy/foggy/dusty day
- Unique CCD window from filmed and toughened glass (5mm thick)
- Auto/Manual calibration ensure accurate motor operation
- Compatible to PELCO P/D protocol and customized protocol for optional
- RS-485 communication port, RS-232, RS-422 for optional
- Wiper, heater & internal temperature control

Pan/Tilt Features:

- OSD Screen display, easy setting
- OSD display the title, angle, zoom and inside temperature
- User definable 128 preset, 8 preset tour
- User defined left /right scan limited and scan speed
- Proportional Pan speed
- User defined home position and park time
- User definable power-up action, including self-testing diagnostics
- Special micro step control to ensure the precise positioning the remote target
- Auto/Manual calibration insures precise system operation.
- Auto-lock pan/tilt.
- Built in temperature control function, lightning surge protection, power-off memory circuit
- Surge & non-volatile protection

Parameters :

General Performance	
Rotation Range	Pan: 0~360° continuous rotation, Tilt: -45°~ +45°
Rotation Speed	Pan: 0.01°~20°/s, Tilt: 0.01° ~ 5.7°/s
Preset Speed	Pan: 20° /s, Tilt:5.7° /s
Preset Accuracy	+/- 0.03° (auto or manual)
Auto Scan	1°-20°/s (auto or manual)
CCD Window	Toughened glass, firmness, high transmittance
Power Supply	AC24V / DC24V
Power Consumption	≤80W
Working Temperature	-20°C ~ +50°C
Storage Temperature	-40°C ~ +60°C
Dimensions(mm)	596×358×555
Packing Volume(mm)	1: 690×430×350, 2: 800×450×310
System Motor	Gear / Auto-lock
Network parameters	
Day/night HD color to black camera	
Image Sensor	Progressive Scan CMOS
Minimum Illumination	Color: 0.002Lux, BW: 0.0002Lux; F1.2, AGC ON
Shutter	1s~1/100,000s
Day/Night Switch	ICR infrared filter plate

DNR	3D digital noise reduction
Wide Dynamic	support
Video Compression Standard	H.264/MPEG4/MJPEG (BaseLine Profile/Main Profile/High Profile)
Frame Rate	25fps(50Hz)/30fps(60Hz)
Code Rate	32Kbps~16Mbps
Maximum Image Size	1920 × 1080
Mainstream Code Resolution	1920 × 1080, 1280 × 960, 1280 × 720; 50Hz/60Hz
The Third Code Resolution	Separately from the main stream settings. Maximized: 1920 × 1080
Image Settings	Corridor pattern, saturation, brightness, contrast ratio, acuteness and the gray level is adjustable from client-side or web browser.
Day/Night Switch mode	Auto/fixed time/event-triggered
Video Mode	Manual/fixed time/motion/alarm
Network Protocol	TCP/IP, ICMP, HTTP, HTTPS, FTP, DHCP, DNS, DDNS, RTP, RTSP, RTCP, PPPoE, NTP, UPnP, SMTP, SNMP, IGMP, 802.1X, Qos, IPv6, Bonjour (SIP optional)
ONVIF	support
Alarm Interface	1 road input and 1 road output
Communication Interface	1个RJ45 10/100M adaptable Ethernet interface, 1个RS485interface.
Video Output	1Vp-p Composite Output (75Ω /BNC)

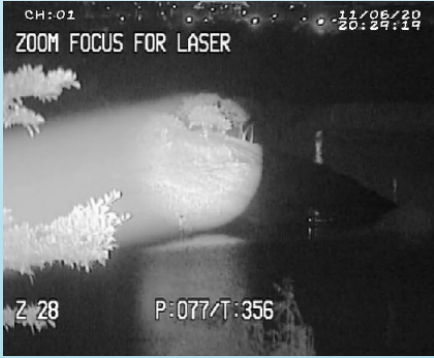
Component		Fog Penetrate Lens						
Focus (mm)	Optical Zoom	Aperture Range	Zoom Focus	Iris	Angle of View		M.O.D	2X extender
					Wide	Tele		
10~350	35X	F1.5~1000	Motorized	Video drive	35.3° x 26.7°	1.05° x 0.79°	2.5m	No

Component	IR Laser					
Optical Output (W)	Wave Length (nm)	Threshold Current(mA)	Working Voltage(V)	Slope Efficiency(%)	Working Current (mA)	Lighting Angle(°)
10	808	500	10.5	1.2	2500	0.25°~4.4°
15	808	500	14.7	1.2	2500	0.25°~4.4°

Order Guide :

Model		PB-775-15L	PB-350-10 L
Lens		12.5-775mm	10~350mm
Laser		15W	10W
Detection Distance		Human Size	Human Size
	Day	5km	3km
	Night	2km	1.2km

Image Reference



Laser Mode
Lens: 775mm
Adjustable Fiber Laser: 15W
Detection Distance: 800m
Detection Target: Person



Fog Penetrate Mode
Day/Night Mode
Lens: 775mm
Detection Distance: 7 km
Detection Ship



Day/Night Mode
Lens: 775mm
Detection Distance: 8km
Detection Ship



Day/Night Mode with 2X Extenders Lens: 775mm Detection Distance: 1km Detection Ship



CCD Camera surveillance
airplane took off
at color mode